

# PORSCHE

## SPRINT CHALLENGE FRANCE

### EVENT HELD PRIOR TO THE START OF THE 24 HOURS OF LE MANS 2022

#### MAIN TECHNICAL SPECIFIC POINTS

Please find below the major specific technical points linked to the Le mans Track that you must take into account when preparing your cars for the race in order to be sure they will go through the scrutineering process.

#### BODYWORK

The front cover of the 992 GT3 Cup must be fitted with a transparent adhesive strip in the position shown in the photo below.

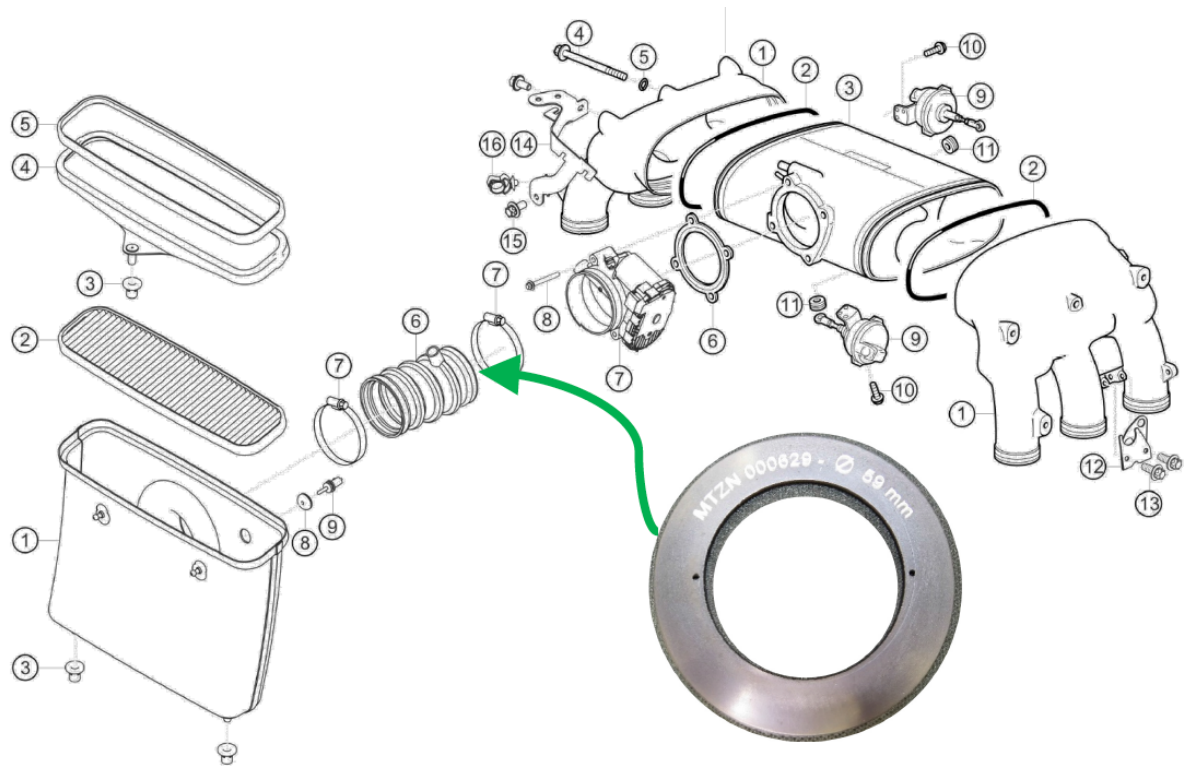


#### EXHAUST

The complete exhaust system is compulsory but the removal of the pre-silencers is authorized.

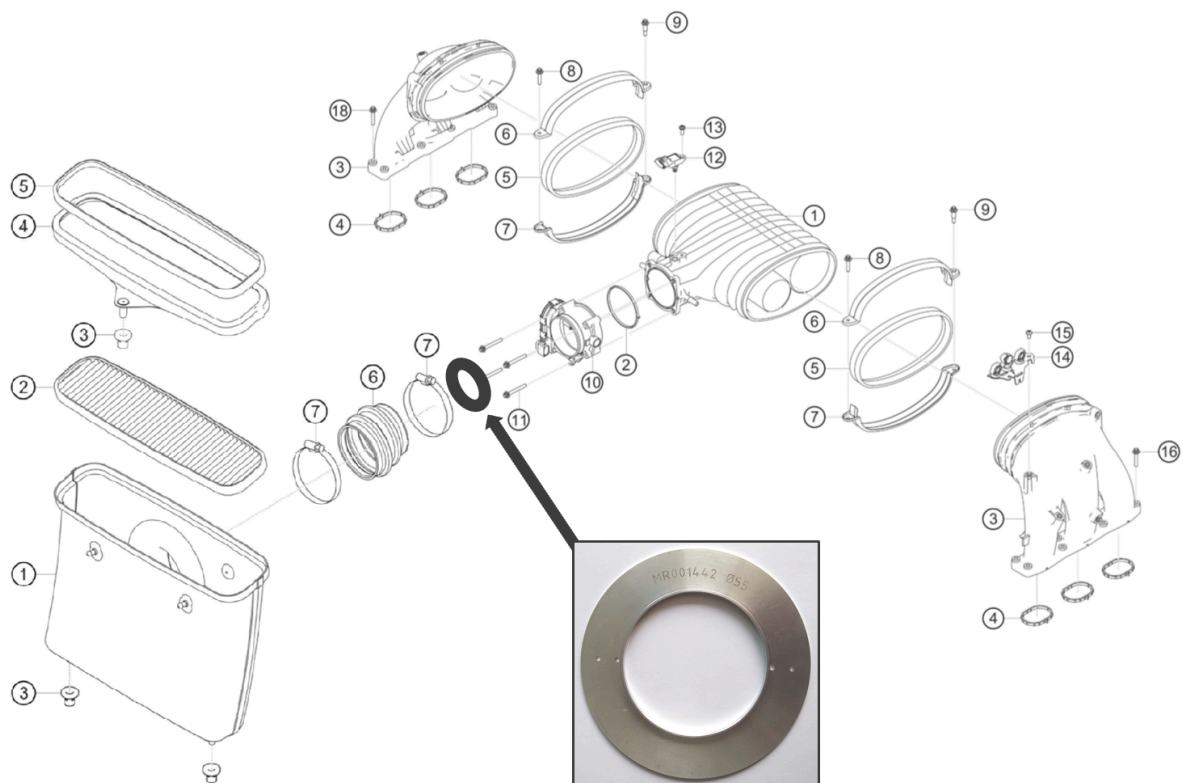
## 991 CUP PHASE I ENGINE

A 59 mm diameter air flow restrictor reference MR001547 must be installed on the intake according to the diagram below. This flow restrictor is available at Manthey Racing ([manthey-racing.de](http://manthey-racing.de)).



## 991 CUP PHASE II ENGINE

A 55 mm diameter air flow restrictor reference MR001442 must be installed on the intake according to the diagram below. This flow restrictor is available at Manthey Racing ([manthey-racing.de](http://manthey-racing.de)).



## CAMBER SPACERS

For 981 GT4 and 718 GT4 cars, the total thickness of the spacer washers used in the front and rear axle control arms to adjust camber cannot exceed 18 mm per wheel.

For 991 Cup cars, the total thickness of the spacer washers used in the front and rear axle control arms to adjust camber cannot exceed 10 mm per wheel.

For 992 Cup cars, the total thickness of the spacer washers cannot exceed 18 mm per wheel on the front axle and 11,5 mm per wheel on the rear axle. The non-removable spacer (part ref 9F1.505.184) of the rear axle is included in the 11,5 mm.

## GROUND CLEARANCE

The minimum values to be observed are as follows (measurement carried out on a hard, flat surface under race conditions, with a tire pressure of 2.0 kg and without a driver on board):

	Front	Rear
981 Cayman GT4 Clubsport	75 mm	94 mm
718 Cayman GT4 Clubsport	82 mm	94 mm
991 GT3 Cup phase I	78 mm	100 mm
991 GT3 Cup phase II	78 mm	100 mm
992 GT3 Cup	72 mm	106 mm
997 GT3 R	-	-
991 GT3 R	-	-

## MINIMUM WEIGHT

The minimum weight as per the table below is measured without driver and without fuel.

981 GT4 CS	1 280 kg
718 GT4 CS	1 330 kg
991 GT3 Cup phase I	1 200 kg
991 GT3 Cup phase II	1 200 kg
992 GT3 Cup	1 290 kg
997 GT3 R	1 200 kg
991 GT3 R	1 220 kg