

PORSCHE

**SPRINT CHALLENGE
FRANCE**

PORSCHE SPRINT CHALLENGE FRANCE

SPORTING REGULATIONS 2022

ADDENDUM NUMBER 01

EVENT HELD PRIOR TO THE START OF THE 24 HOURS OF LE MANS 2022

In case of discrepancies between French and English versions of this regulations, the French version has to be taken into account.

1. SPORTING REGULATIONS

ARTICLE 1.1: ORGANIZATION

PORSCHE CLUB MOTORSPORT FRANCE is the organizer of the 2022 "**PORSCHE SPRINT CHALLENGE FRANCE**" championship and of the races prior to the start of the 2022 24 Hours of Le Mans ("the Races"). The Races are contested outside the championship.

All the points not provided for in these regulations relate to:

- sporting and technical annexes of the **PORSCHE CLUB MOTORSPORT FRANCE**,
- technical notes from **PORSCHE CLUB MOTORSPORT FRANCE**,
- the international sports code,
- general prescriptions of the Fédération Française du Sport Automobile ("FFSA"),
- the standard regulations for asphalt circuits,
- the specific regulations of the event concerned,
- the organizing committee.

These regulations have been registered by the FFSA under the organization permit n° C48/2022 dated 25.01.2022. This addendum is an integral part of the regulations. Only the modified articles are included in the addendum.

The **PORSCHE SPRINT CHALLENGE FRANCE** Organizing Committee, which is vested with all powers for the organization of the events and the Race, is made up of the following members:

Mr. Bruno Combe

Mr. Vincent Flandin

Mr. Patrick Vegeais

ARTICLE 1.2: COMMITMENT

1.2.1 REGISTRATION BY INVITATION

A competitor wishing to enter a car for the Race must send an entry request form to:

PORSCHE CLUB MOTORSPORT FRANCE - BP 10737 - 75827 PARIS CEDEX 17

This registration request must be accompanied by proof of a wire transfer of the amount of the registration fee, i.e.:

- 6,800 € excluding VAT (8,160 € including VAT) for competitors registered for the 2022 season of the **PORSCHE SPRINT CHALLENGE FRANCE**.
- 7,500 € excluding VAT (9,000 € including VAT) for all other competitors.

Wire transfers must be made to PCM Motorsport France (IBAN: FR76 3000 4008 2100 0103 2792 232 - BIC: BNPAFRPPPT), operator of the **PORSCHE SPRINT CHALLENGE FRANCE**.

No registration request will be considered without proof of payment.

The Organizing Committee shall consider all applications in good faith and reserves the right to refuse any request without having to provide a justification.

1.2.2 No entry will be refunded in the event of non-participation in the event.

1.2.3 The total number of entries is limited to the number of cars authorized for practice, i.e. 71 cars. Entries are taken into account according to the date of receipt of the entry forms. In the event that less than 15 cars are entered by May 15, 2022, the organizer reserves the right to cancel the event. The entry fees will then be fully refunded.

1.2.4 Each crew participating in the event is made up of one or two drivers.

1.2.5 PILOTS

Competitors and drivers must hold a National Competitor Driver's License 2022 or higher.

Each driver must communicate his record and his FIA grade with his entry form.

ARTICLE 1.3: CARS AND EQUIPMENT

1.3.1 GENERAL

A competitor can only use one car for the Race. The car must comply at all time with the technical and sporting regulations in force.

1.3.2 ELIGIBLE CARS

All Porsche cars listed in Article 2 of the technical regulations fitted with the safety features provided for in Article 3 of the technical regulations.

1.3.3 GROUPS

Cars are divided into 8 groups:

- Group 981: 981 Cayman GT4 CS
- Group 718: 718 Cayman GT4 CS.
- Group 991-1: 991 GT3 Cup phase I.
- Group 991-2: 991 GT3 Cup phase II.
- Group 992: 992 GT3 Cup.
- Group R: 997 GT3 R and 991 GT3 R.

1.3.4 FUEL - TIRES - EQUIPMENT

1.3.4.1 FUEL Only the fuel supplied by the organizer is authorized. Additives are prohibited. Refueling must be done at the pump set up in the paddock by the organizers.

Cars must always take to the track with a full tank of fuel during free practice, the qualifying session and the race.

Any competitor who arrives at the exit of the paddock with a tank which is not completely filled will not be allowed to take to the track.

Refueling is prohibited during practice, qualifying and the Races.

1.3.4.2 TIRES Competitors in the event must use Michelin tires marked by the organizer in the dimensions indicated in the technical regulations of the Race. These tires shall be supplied by **AUVERGNE PNEUMATIQUES RACING**, which represents Michelin exclusively on the event.

For free practice, qualifying and Races, the number of slick tires is limited to 12 per car (3 sets). One set must be used for free practice sessions, one set must be used for Q1 and Race 1, one set must be used for Q2 and Race 2.

Each competitor will be allowed to use 2 joker slick tires in addition to his 12 slick tires allocation. In the event of rain, the Clerk of the Course may declare the track wet. In this case and in this case only, the competitors are authorized to use the type of rain tires defined in the technical regulations. The number of rain tires is not limited.

1.3.4.3 JOKER TIRES Each competitor will be allowed to use 2 joker slick tires in addition to his 12 slick tires allocation.

1.3.4.4 INTERVENTIONS ON THE CARS The number of people authorized to intervene on the cars stopped in the pit lane is not limited.

1.3.4.5 TRANSPONDER Cars must be equipped with an AMB My Laps Tran x2 type transponder. This transponder must be powered by the vehicle's battery and permanently attached to the vehicle. It must be in correct operation as soon as the car leaves its pit.

1.3.4.6 CAMERA Each car must be equipped with an on-board camera in permanent operation during practice sessions, qualifying and races filming the driver, the steering wheel and the track in front of the car. The organizers, the race director or the stewards may ask to see the images on the competitor's computer at any time during the meeting. In case the images are not available for whatever reason, a report will be sent to the stewards committee who may take any sanction it deems appropriate according to the regulations in force.

1.3.4.7 WARNING SYSTEM Each car must be equipped with a "slow zone" warning and penalty system as provided by a COYOTE unit. This unit shall be supplied by the organizer with the appropriate operating license and must be installed in accordance with the technical description which will be provided to competitors at least one week before the Race.

ARTICLE 1.4: MANDATORY ADVERTISING

Cars participating in the Race must display the decals provided, in accordance with the identification plan annexed to these sporting regulations.

ARTICLE 1.5: SITE AND INFRASTRUCTURE

1.5.1 PIT AREA

The speed is limited to 60 km/h in the pit lane subject to the following penalties:

- Qualifying session: cancellation of times achieved during the session before the offense.
- Race - 1st offense: drive through.
- Race - 2nd offense: 10 second stop & go.

ARTICLE 1.6: RUNNING OF THE RACE

1.6.1 SCHEDULE

A final schedule will be sent to competitors a few days before the meeting.

1.6.2 ADMINISTRATIVE CHECKS

All competitors and drivers must come to administrative checks with their license and complete safety equipment.

In case of two drivers sharing a car, the competitor must give to the organization the name of the driver taking the start of each race at the latest during the administrative verifications.

1.6.3 TECHNICAL CHECKS

All vehicles must be presented to technical control, accompanied by their technical passport.

1.6.4 BRIEFING

All competitors and drivers must be present throughout the briefing. An attendance sheet is signed by all the drivers present.

Any absence from the briefing is penalized by a demotion of 10 places on the starting grid for the driver concerned.

1.6.5 FREE PRACTICE

The event consists of two free practice sessions of 35 minutes each. If two drivers are sharing the same car, each driver must participate to one practice session.

1.6.6 QUALIFYING SESSION

The event consists of two qualifying sessions of 20 minutes each. If two drivers are sharing a car, each driver must participate to one qualifying session.

1.6.7 RACES

The event includes two 45-minute Races. If two drivers are sharing a car, each driver must participate in the Race for which he has qualified.

The starting grid for the Races is determined by the classification of the related qualifying session according to article 6.6.

To be authorized to start the Race, the driver must have set a time no higher than 130% of the pole position.

1.6.8 START OF THE RACES

The races will be launched with a rolling start after a formation lap behind the leading car.

1.6.11 PARC FERME

The Parc Ferme is located in front of the tents used as boxes for the cars.

Parc Fermé conditions are indicated by a red flag placed on the **PORSCHE SPRINT CHALLENGE FRANCE** technical structure.

When the red flag is raised, each driver must make sure that his car is placed on its wheels in front of his box.

No intervention is allowed on the cars as long as the red flag is raised, including checking tire pressure, downloading data or cleaning the bodywork.

Only the technical stewards are allowed to approach the cars as well as the drivers and mechanics that the technical stewards have asked to intervene under their supervision.

The replacement of the red flag by a green flag indicates that the restrictions related to the Parc Ferme conditions are lifted

ARTICLE 1.7: PENALTIES

For any penalty not provided for in these regulations or in the general prescriptions of the FFSA as well as in the regulations of the FFSA circuits, the Clerk of the Course is empowered to request any disciplinary sanction from the representatives of the FFSA.

ARTICLE 1.8: CLASSIFICATION

1.8.1 A general classification and a classification by group will be established at the end of each Race.

1.8.2 POINTS ALLOCATION

Points will be awarded per group according to the usual scale used for the championship for drivers competing in the opening round of the 24 Hours of Le Mans in a car entered for the **PORSCHE SPRINT CHALLENGE FRANCE 2022** season. At the end of the season, the drivers concerned will deduct the points corresponding to their worst ranking or their two worst rankings depending on whether they took part in one or both races of the opening event of the 24 Hours of Le Mans.

2. TECHNICAL REGULATIONS

ARTICLE 2.1: GENERALITIES

2.1.1 RULES AND REFERENCE DOCUMENTS

The cars entered for the event must fully comply with the technical specifications of the present Regulations and with Appendix J of the International Sporting Code. They must be in possession of a valid pass registered with the FFSA or the corresponding document of another ASN associated with the FIA.

The cars entered in the event must comply with the following reference elements:

- Articles 251 to 277 of Appendix J of the FIA regulations,
- General prescriptions of the FFSA relating to races held on a circuit,
- The present technical regulations,
- The technical manuals of the eligible cars published by Dr. Ing. h.c. F. Porsche AG,
- The technical information bulletins published by Dr. Ing. h.c. F. Porsche AG,
- Software newsletters published by Dr. Ing. h.c. F. Porsche AG,
- Spare parts catalogs published by Dr. Ing. h.c. F. Porsche AG.

In the event of any discrepancies between these technical regulations and the above-mentioned documents issued by Dr. Ing. h.c. F. Porsche AG, these technical regulations shall prevail.

2.1.2 MODIFICATIONS

Anything that is not expressly authorized by these regulations is prohibited. The replacement of parts for whatever reason can only be done with parts that are strictly identical to the original, unless otherwise specified in these regulations.

ARTICLE 2.2: ELIGIBLE CARS

All Porsche appearing in the list below, equipped with the safety features provided for in Article 2.3 of these regulations.

The cars are divided into 8 groups:

- Group 981: 981 Cayman GT4 CS
- Group 718: 718 Cayman GT4 CS.
- Group 991-1: 991 GT3 Cup phase I.
- Group 991-2: 991 GT3 Cup phase II.
- Group 992: 992 GT3 Cup.
- Group R: 997 GT3 R and 991 GT3 R.

Unless otherwise specified in these technical regulations, the cars participating in the event must comply with the homologation or the regulations of the Porsche Carrera Cup at the time of construction.

ARTICLE 2.3: SAFETY

2.3.1 MANDATORY EQUIPMENT

Cars participating in the event must be equipped with at least the following safety elements (non-exhaustive list): welded roll cage, bucket seat, 6-point safety harness, 2 kg manual fire extinguisher, side protection nets fixed to the roll cage, safety kill switch, front and rear tow eyes. All of these safety elements must comply with the requirements set out in article 253 of appendix J of the valid FIA regulations.

It is recommended to install a harness cutter / glass breaker within easy reach of the driver when he is strapped in his seat.

Drivers must wear the safety equipment as presented in the general prescriptions of the Fédération Française du Sport Automobile ("FFSA"). Wearing racing overalls and underwear compliant with FIA 8856-2000 standards and a frontal head restraint system (HANS or other comparable device) are mandatory.

2.3.2 OPERATION AND PRESENTATION

All cars entered in the event must be in good working order and in presentation. The scrutineers reserve the right to draw up a report to the Clerk of the Course who will take any decision he deems necessary in order to possibly prohibit access to the track to any car which could present a potential danger to its driver or to other competitors because of its condition.

ARTICLE 2.4: VEHICLE CONFIGURATION

2.4.1 BODYWORK

The bodywork must comply with the technical manual and spare parts catalog published by Dr. Ing. h.c. F. Porsche AG for the respective model.

Cayman GT4 Clubsport cars can be equipped with the Manthey Racing GT4 kit for GT4 SRO homologation. If the Manthey Racing GT4 kit is used, it must be installed in its entirety.

The front cover of the 992 GT3 Cup must be fitted with a transparent adhesive strip in the position shown in the photo below.



2.4.2 EXHAUST

All the cars entered in the event must be fitted with exhaust silencers limiting the noise to a maximum level of 100 dB (A) at 3800 rpm or 75% of the maximum speed measured using a sound level meter placed at an angle of 45 ° with respect to the axis of the exhaust pipe at 50 cm from the exhaust outlet and at 50 cm (\pm 10 cm) from the ground in accordance with the FFSA regulations in force.

The complete exhaust system is compulsory but the removal of the pre-silencers is authorized.

2.4.3 ENGINE

Coolant is prohibited.

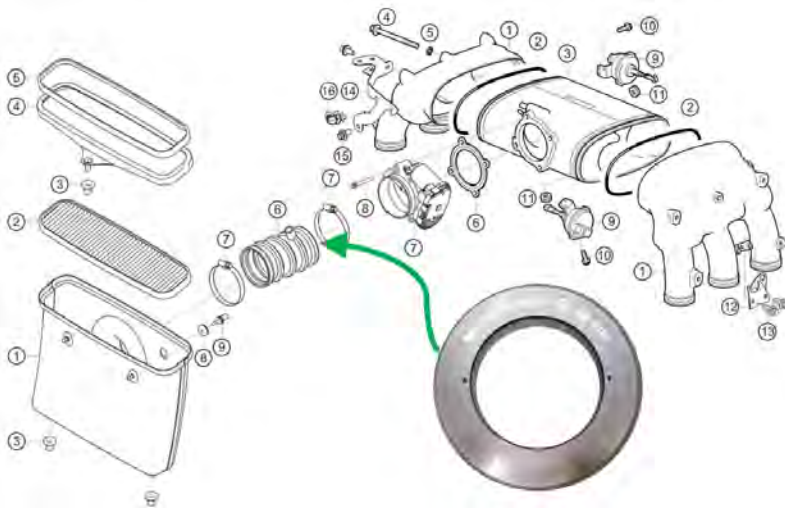
The engine must comply with the technical manual and spare parts catalog published by Dr. Ing. h.c. F. Porsche AG for the respective model.

Cayman GT4 Clubsport cars can be equipped with the Manthey Racing GT4 Kit for GT4 SRO homologation. If the Manthey Racing GT4 kit is used, it must be installed in its entirety.

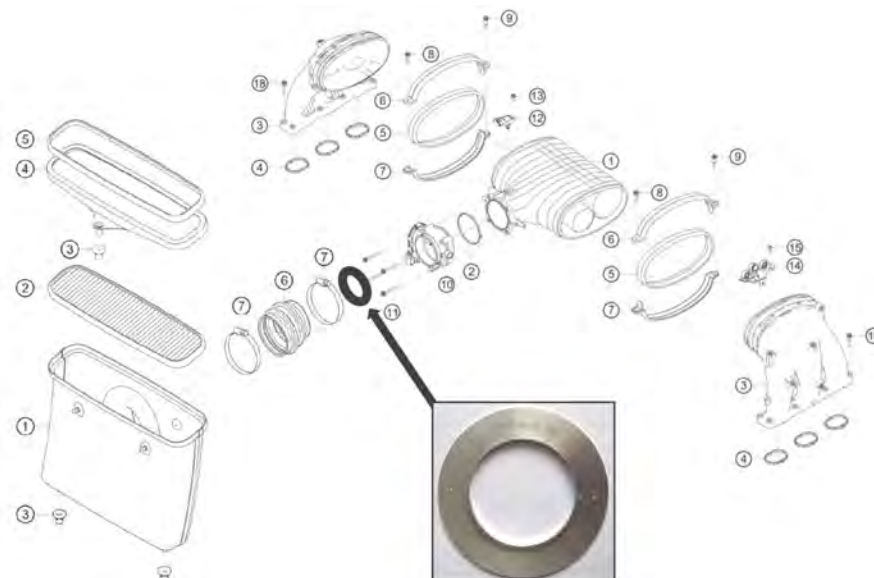
997 GT3 R's must be fitted with an intake flange no larger than 76mm in diameter.

991 GT3 R's must be fitted with two intake flanges of no more than 43mm diameter each.

991-1 Cup cars must be fitted with a 59 mm diameter air flow restrictor reference MR001547 installed on the intake according to the diagram below.



991-2 Cup cars must be fitted with a 55 mm diameter air flow restrictor reference MR001442 installed on the intake according to the diagram below.



2.4.4 TRANSMISSION

The entire transmission (clutch, gearbox, differential, limited slip clutch, wheel shafts) must comply with the technical manual and spare parts catalog published by Dr. Ing. h.c. F. Porsche AG for the respective model.

Cayman GT4 Clubsport cars can be equipped with the Manthey Racing GT4 kit for GT4 SRO homologation. If the Manthey Racing GT4 kit is used, it must be installed in full.

2.4.5 RIMS AND TIRES

The rims must comply with the technical manual and spare parts catalog published by Dr. Ing. h.c. F. Porsche AG for the respective model.

The permitted sizes and types of Michelin Slick tires for the various eligible car models are as follows:

	Front	Rear
• 981 Cayman GT4 Clubsport	25/64-18 N2	27/68-18 N2
• 718 Cayman GT4 Clubsport	25/64-18 N2	27/68-18 N2
• 991 GT3 Cup	27/65-18 N2	31/71-18 N2
• 992 GT3 Cup	30/65-18 N3	31/71-18 N3
• 997 GT3 R	27/65-18 S9	31/71-18 S9
• 991 GT3 R	30/68-18 S9	31/71-18 S9

The tires are marked by the organizer and the marking can be checked at any time.

The use of unmarked tires, the refusal to let the organizer carry out a control or the fact of trying to evade a control during practice or the race automatically results in disqualification from the Race subject to additional penalties that may be decided by the Clerk of the Course.

2.4.6 BRAKES

The brakes must comply with the technical manual and spare parts catalog published by Dr. Ing. h.c. F. Porsche AG for the respective model.

The choice of brake pads is free, provided that they have the same dimensions and friction surface as those listed in the technical manual and spare parts catalog published by Dr. Ing. h.c. F. Porsche AG for the respective model.

The addition of a Porsche-approved ABS system is permitted if it is not installed as standard.

Reinforced hoses are authorized.

Choice of brake fluid is free.

2.4.7 ROLLING GEAR

The rolling gear must comply with the technical manual and spare parts catalog published by Dr. Ing. h.c. F. Porsche AG for the respective model.

Cayman GT4 Clubsport cars can be equipped with the Manthey Racing GT4 Kit for GT4 SRO homologation. If the Manthey Racing GT4 kit is used, it must be installed in its entirety.

The suspension settings are free within the limits provided by the manufacturer and the mounting holes for the original suspensions. Any modification of the fixing points and suspension elements by any means whatsoever is prohibited.

The total thickness of the spacer washers used in the front and rear axle control arms to adjust camber cannot exceed 18 mm per wheel for cars entered in groups 981 and 718.

The total thickness of the spacer washers used in the front and rear axle control arms to adjust camber cannot exceed 10 mm per wheel for cars entered in groups 991-1 and 991-2.

For cars entered in group 992, the total thickness of the spacer washers cannot exceed 18 mm per wheel on the front axle and 11,5 mm per wheel on the rear axle. The non-removable spacer (part ref 9F1.505.184) of the rear axle is included in the 11,5 mm.

2.4.8 GROUND CLEARANCE

The ground clearance is measured between the ground and the reference points listed in the technical documentation issued by Dr. Ing. h.c. F. Porsche AG for the respective model.

If several reference points are used in different championships, the following measurements are to be taken at the reference points listed in the technical documentation published by Dr. Ing. h.c. F. Porsche AG for the respective model.

The measurement is carried out on a hard, flat surface under race conditions, with a tire pressure of 2.0 kg and without a driver on board.

The minimum values to be observed are as follows:

	Front	Rear
981 Cayman GT4 Clubsport	75 mm	94 mm
718 Cayman GT4 Clubsport	82 mm	94 mm
991 GT3 Cup	78 mm	100 mm
992 GT3 Cup	72 mm	106 mm
997 GT3 R	-	-
991 GT3 R	-	-

2.4.9 BALLAST

In order to reach the minimum weight mentioned in article 2.4.10, some cars will have to be equipped with a handicap ballast whose fixations will have to be in conformity with the definition of articles 257-4-2 or 258-4-2 of appendix J as well as drawing 258-5 of appendix J of the FIA regulations in force. The weight of the ballast is left to the discretion of the competitors provided that the weight of the car is at least equal to the minimum weight mentioned in article 2.4.10.

2.4.10 MINIMUM WEIGHT

The minimum values to be respected under racing conditions (with oil and coolant, without fuel) are the following:

981 GT4 CS	1 280 kg
718 GT4 CS	1 330 kg
991 GT3 Cup	1 200 kg
992 GT3 Cup	1 290 kg
997 GT3 R	1 200 kg
991 GT3 R	1 220 kg

ARTICLE 2.5: TECHNICAL CHECKS AND PENALTIES

The scrutineers are authorized to check the conformity of the cars by any means at any time and / or at the request of the Organizing Committee, the race director or the stewards.

At the end of each practice session, qualifying session and at the end of the race, a minimum of three cars, at the discretion of the scrutineers, are taken from the parc fermé for a thorough technical control.

The refusal to let the organizer, the race director or the stewards carry out a control, or seeking to evade a control automatically results in disqualification from the race, subject to additional penalties which may be decided by the Organizing Committee, the race director or the stewards.

In the event of non-compliance of a car, the following penalties may be requested by the Clerk of the Course on the report of the technical scrutineer:

- Cancellation of practice and qualifying times;
 - Disqualification from the race;
 - Exclusion from the event.
-